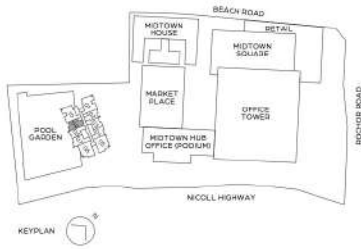
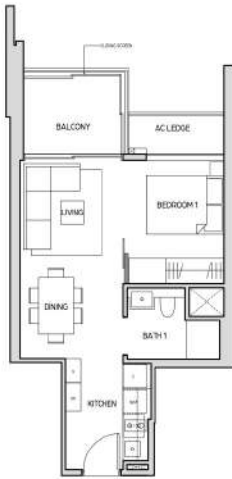


**1 BEDROOM**  
**1卧室**

**TYPE A1**  
44 sq m / 474 sq ft  
#08-09 to #24-09



**LEGEND (WHERE APPLICABLE)**

- |                      |                         |
|----------------------|-------------------------|
| F - FRIDGE           | DB - DISTRIBUTION BOARD |
| WM - WASHING MACHINE | IH - INDUCTION HOB      |
| S - STORAGE          | SO - STEAM OVEN         |

All areas and measurements stated in this floor plan are approximate and subject to final survey. The layout / location of wardrobes, kitchen cabinets and appliances, DB, door swing directions and sanitary wares are subject to final design. BP Approval No. A1606-00001-2018-BP02 dated 06/10/2019

**1 BEDROOM**  
**1卧室**

**TYPE A2**  
45 sq m / 484 sq ft  
#08-08 to #24-08



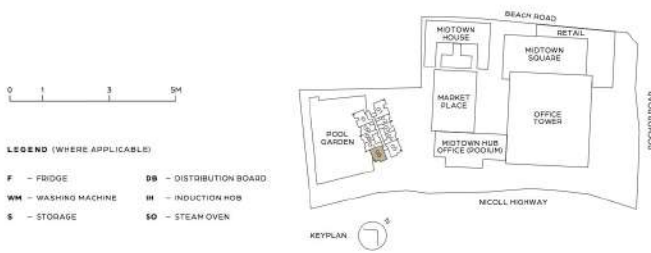
**LEGEND (WHERE APPLICABLE)**

- |                      |                         |
|----------------------|-------------------------|
| F - FRIDGE           | DB - DISTRIBUTION BOARD |
| WM - WASHING MACHINE | IH - INDUCTION HOB      |
| S - STORAGE          | SO - STEAM OVEN         |

All areas and measurements stated in this floor plan are approximate and subject to final survey. The layout / location of wardrobes, kitchen cabinets and appliances, DB, door swing directions and sanitary wares are subject to final design. BP Approval No. A1606-00001-2018-BP02 dated 06/10/2019

## 2 BEDROOM

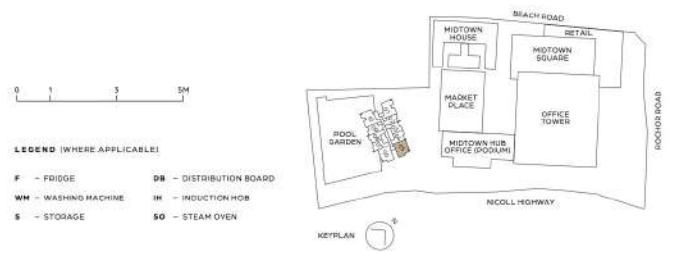
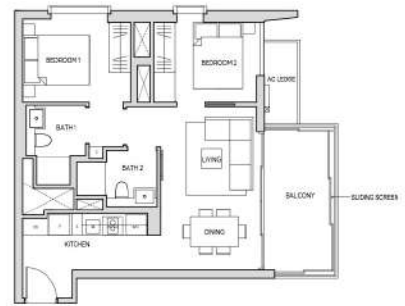
**TYPE B1**  
68 sq m / 732 sq ft  
#07-06 to #24-06



All areas and measurements stated in this floor plan are approximate and subject to final survey. The layout / location of wardrobes, kitchen cabinets and appliances, DB, door swing directions and sanitary wares are subject to final design. BP Approval No. A1606-00001-2018-BP02 dated 10 June 2019

## 2 BEDROOM

**TYPE B1a**  
68 sq m / 732 sq ft  
#07-05 to #24-05



All areas and measurements stated in this floor plan are approximate and subject to final survey. The layout / location of wardrobes, kitchen cabinets and appliances, DB, door swing directions and sanitary wares are subject to final design. BP Approval No. A1606-00001-2018-BP02 dated 10 June 2019

**2 BEDROOM  
DUPLEX SETUP**  
两卧复式单位



**RESIDENTIAL SET UP**  
空间设置

The 2 bedroom duplex is a carefully thought out residential unit. Its upper floor comes complete with two well-sized bedrooms. Additionally, it has a built-in platform that can comfortably fit a sofa bed. This can easily become a guest bedroom, or be used as a study or cosy corner.

The lower level is well-proportioned with living, dining and entertaining spaces.

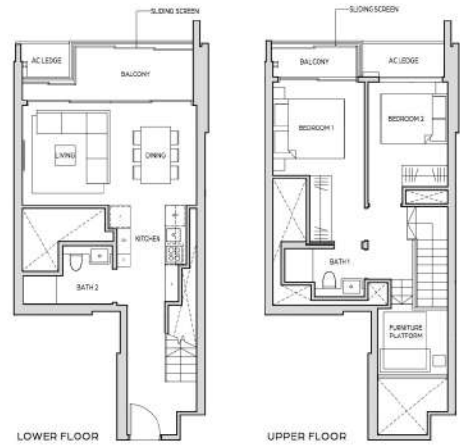
这一两卧室式公寓单位经过精心设计而成。其上层设有两间设施齐全且尺寸合宜的卧室。此外，它还有可轻松放置一张沙发床的室内平台，可用作客房、书房或休闲空间。

下层经过合理的空间分配，是您生活、用餐和娱乐的理想之所。

**2 BEDROOM DUPLEX**  
2卧室

**TYPE B7-DP**  
95 sq m / 1023 sq ft

#26-06 | #28-08 | #30-08 | #32-08



**LEGEND (WHERE APPLICABLE)**

- |                      |                         |
|----------------------|-------------------------|
| F - FRIDGE           | DB - DISTRIBUTION BOARD |
| WM - WASHING MACHINE | IH - INDUCTION HOB      |
| S - STORAGE          | SO - STEAM OVEN         |



All areas and measurements stated in this floor plan are approximate and subject to final survey. The layout / location of wardrobes, kitchen cabinets and appliances, DB, door swing directions and sanitary wares are subject to final design. SP Approval No. A1609-00011-2018-BP02 dated 10 June 2019

### 3 BEDROOM DUPLEX SETUP 三卧复式单位



#### RESIDENTIAL SET UP 空间设置

The 3-bedroom duplex is designed to cater to the whole family in mind. The upper level has two bedrooms, each with its ensuite bathroom for complete privacy. The built-in platform can be used as a quiet study, while the balcony looks out to the stunning surrounds.

The lower level also has a well-sized bedroom that can accommodate occasional guests or other family members.

三卧复式公寓专为家庭生活而设。其上层拥有两间卧室，均配有独立浴室，为您提供私人空间。室内平台可用作安静的书房，而其阳台则可俯瞰迷人的城市天际线。

公寓的下层空间还设有一间宽敞的卧室，可用于接待偶尔到访的客人或其他家庭成员。

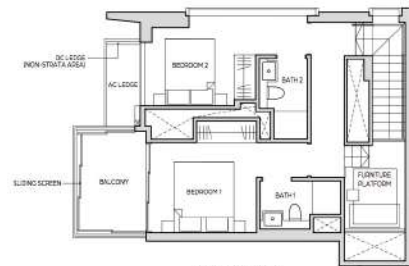
### 3 BEDROOM DUPLEX 3 卧室

TYPE B1-DP  
123 sq m / 1324 sq ft

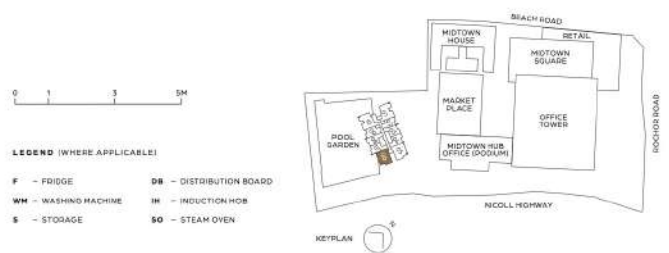
#26-06 | #28-06 | #30-06 | #32-06



LOWER FLOOR



UPPER FLOOR



#### LEGEND (WHERE APPLICABLE)

- |                      |                         |
|----------------------|-------------------------|
| F - FRIDGE           | DB - DISTRIBUTION BOARD |
| WM - WASHING MACHINE | IH - INDUCTION HOB      |
| S - STORAGE          | SO - STEAM OVEN         |

All areas and measurements stated in this floor plan are approximate and subject to final survey. The layout / location of wardrobes, kitchen cabinets and appliances, DB, door swing directions and sanitary wares are subject to final design. SP Approval No. A1609-00091-2018-BP02 dated 10 June 2019